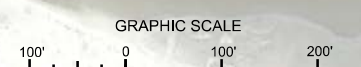



MAP LABEL	AIDS TO NAVIGATION	PLANE COORDINATES		LATITUDE	LONGITUDE
		X	Y		
CHS1	LR BUOY 51 (07/22)	476550	2204561	30°28'47.61n	81°34'22.80w
YCS	LR BUOY 51 (09/24)	476550	2204065	30°28'42.95n	81°34'22.02w



NOTES:
 1. REFER TO SURVEY NO. 22-145.
 2. SEE SHEET NO. 1 FOR SURVEY NOTES.



US Army Corps of Engineers
 Jacksonville District
 SAFETY ON THIS JOB
 DEPENDS ON YOU

DEPARTMENT OF THE ARMY
 JACKSONVILLE DISTRICT, CORPS OF ENGINEERS
 JACKSONVILLE, FLORIDA

Designed by: WRM
 Drawn by: WRM
 File No: 22-145-BS-BRDLDGN
 Date: JUL 2022

Checked by: GHR
 Date: 07/22/22

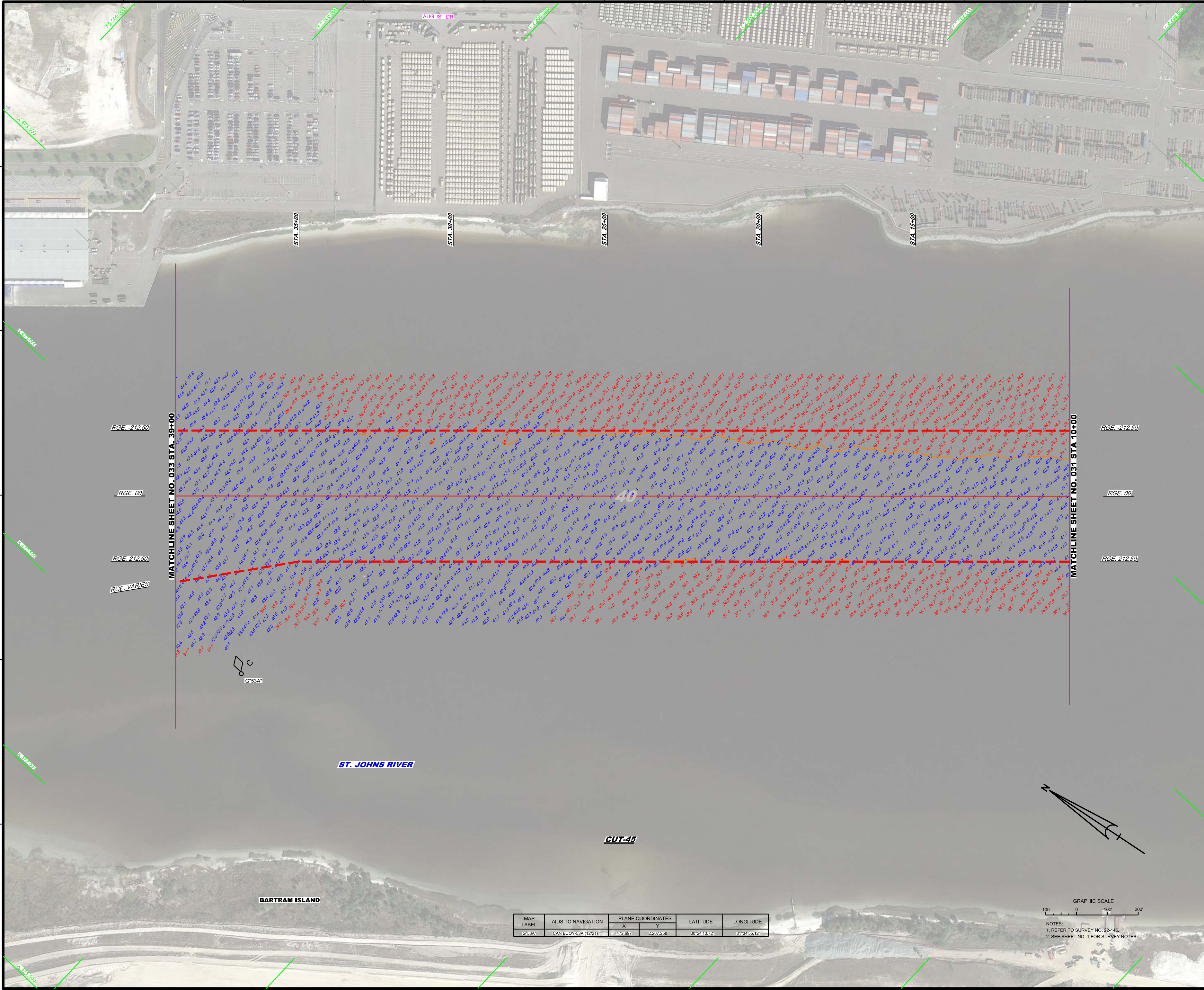
3rd QUARTER EXAM SURVEY FY22
30, 34, 38, 40, 47 & 49-FOOT PROJECT
PLAN

STA. 35+00 CUT-44 THRU STA. 10+00 CUT-45

Scale: AS SHOWN

Drawing no. **31**

SHEET 31 OF 57



MATCHLINE SHEET NO. 033 STA. 39+00
 RGE. -212.50
 RGE. 00
 RGE. 212.50
 RGE. VARIES

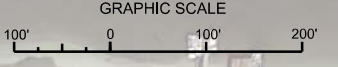
MATCHLINE SHEET NO. 031 STA 10+00
 RGE. -212.50
 RGE. 00
 RGE. 212.50

ST. JOHNS RIVER


CUT-45

BARTRAM ISLAND

MAP LABEL	AIDS TO NAVIGATION	PLANE COORDINATES		LATITUDE	LONGITUDE
		X	Y		
G°53A	CAN BUOY-53A (1221)	472.697	2,207.258	30°24'13.72"	81°34'55.12"



NOTES:
 1. REFER TO SURVEY NO. 22-145.
 2. SEE SHEET NO. 1 FOR SURVEY NOTES.



US Army Corps of Engineers
 Jacksonville District
 SAFETY ON THIS JOB
 DEPENDS ON YOU

Designed by: **WRM**
 Drawn by: **WRM**
 Check by: **GHR**
 Date: **JUL 2022**

XXXXXXXXXXXXXXXXXXXX
 22-145-CA-040.DGN
 22-145-CA-040.DGN
 22-145-BS-310.DGN
 22-145-BS-310.DGN

JACKSONVILLE HARBOR, FLORIDA

3rd QUARTER EXAM SURVEY FY22
30, 34, 38, 40, 47 & 49-FOOT PROJECT

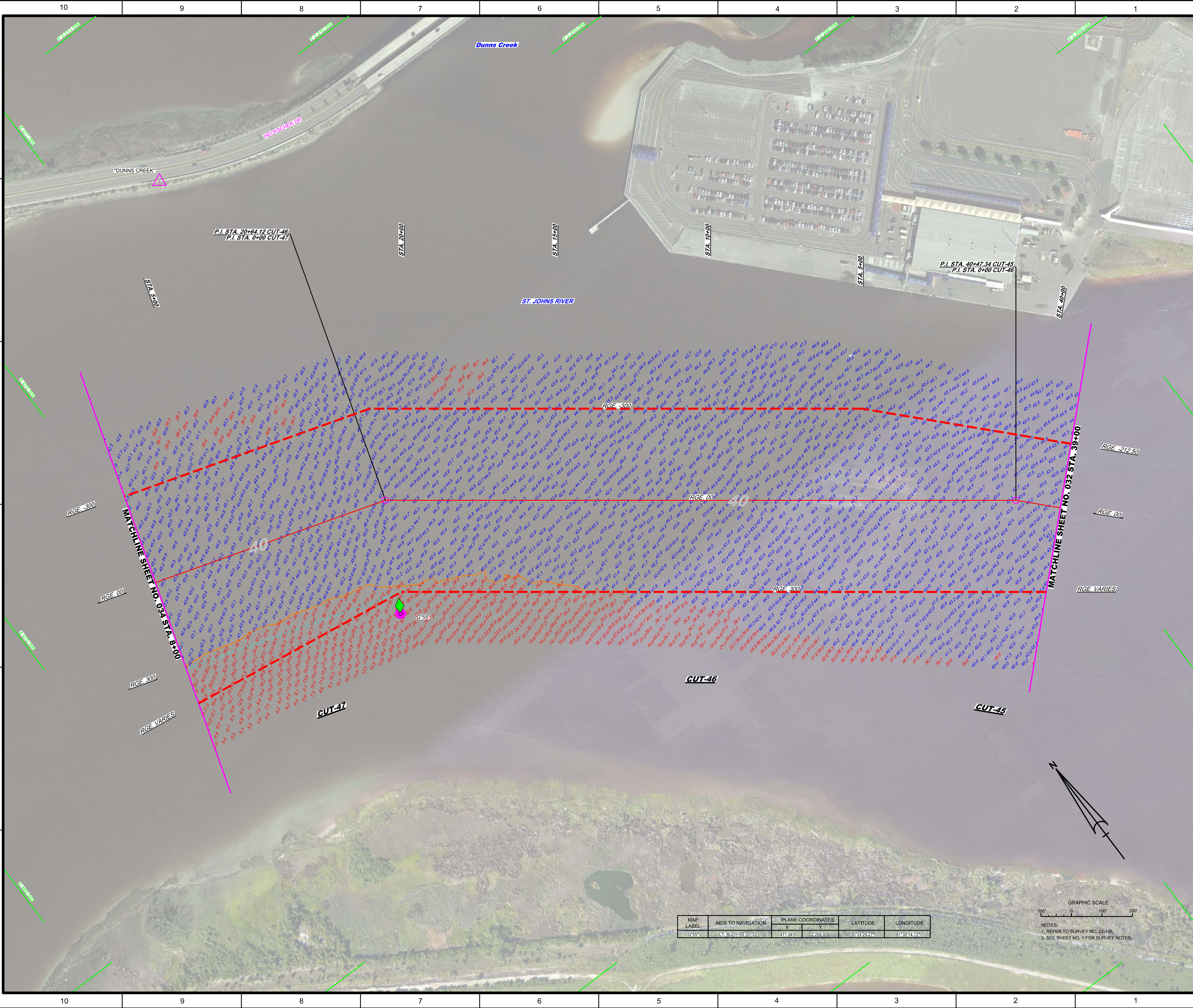
STA. 10+00 THRU STA. 39+00 CUT-45
PLAN

Scale: AS SHOWN

Drawing no.
32

DEPARTMENT OF THE ARMY
 JACKSONVILLE DISTRICT, CORPS OF ENGINEERS
 JACKSONVILLE, FLORIDA

SHEET 32 OF 57



P.I. STA. 20+64.12 CUT-46
P.I. STA. 0+00 CUT-47

P.I. STA. 40+74.34 CUT-45
P.I. STA. 0+00 CUT-46

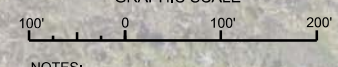
MATCHLINE SHEET NO. 034 STA. 0+00

MATCHLINE SHEET NO. 032 STA. 39+00

CUT-46

CUT-45

MAP LABEL	AIDS TO NAVIGATION	PLANE COORDINATES	LATITUDE	LONGITUDE	
	X	Y			
G-55*	L.T. BUOY-55 (0722)	471.041	2.208.838	30°24'29.27"	81°35'14.13"



NOTES:
1. REFER TO SURVEY NO. 22-145.
2. SEE SHEET NO. 1 FOR SURVEY NOTES.

US Army Corps of Engineers
Jacksonville District

SAFETY ON THIS JOB
DEPENDS ON YOU

DEPARTMENT OF THE ARMY
JACKSONVILLE DISTRICT, CORPS OF ENGINEERS
JACKSONVILLE, FLORIDA

Checked by: **GHR**

Designed by: **WRM**

Drawn by: **WRM**

File No: **22-145-65-BS-RI-03DN**

Date: **JUL 2022**

Reference Map: **22-145-65-BS-RI-03DN**

File Name: **22-145-65-BS-RI-03DN**

JACKSONVILLE HARBOR, FLORIDA

3rd QUARTER EXAM SURVEY FY22

30, 34, 38, 40, 47 & 49-FOOT PROJECT

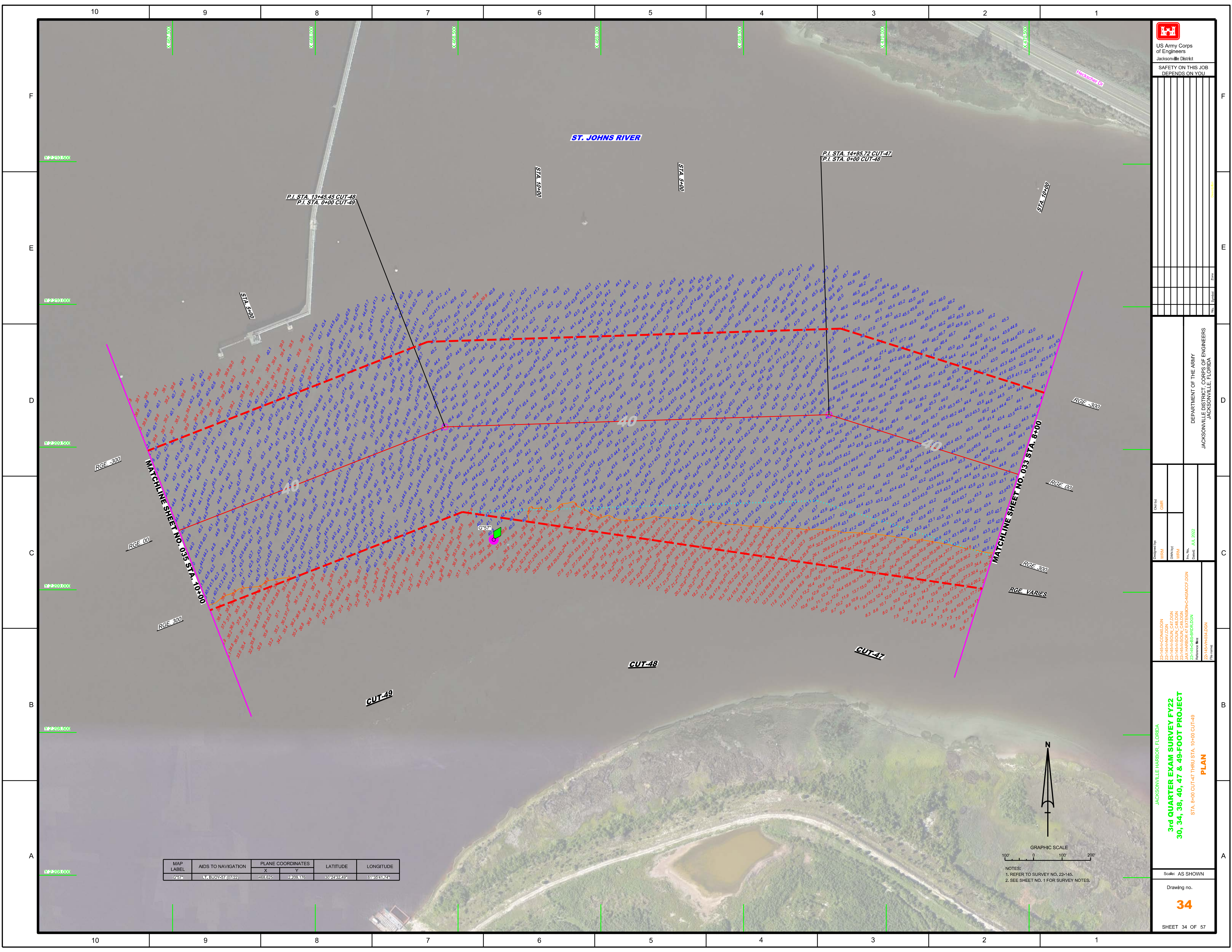
STA. 39+00 CUT-45 THRU STA. 8+00 CUT-47

PLAN

Scale: AS SHOWN

Drawing no. **33**

SHEET 33 OF 57



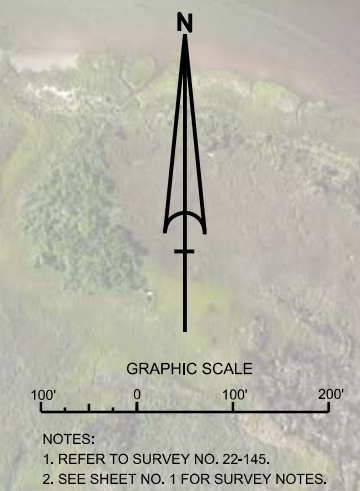

 US Army Corps of Engineers
 Jacksonville District
 SAFETY ON THIS JOB
 DEPENDS ON YOU

DEPARTMENT OF THE ARMY
 JACKSONVILLE DISTRICT, CORPS OF ENGINEERS
 JACKSONVILLE, FLORIDA

Checked By: GHR
 Designed By: WRM
 Drawn By: WRM
 Project No: 22-145-000-000
 Project Name: 3rd QUARTER EXAM SURVEY FY22
 Date: JUL 2022

JACKSONVILLE HARBOR, FLORIDA
3rd QUARTER EXAM SURVEY FY22
30, 34, 38, 40, 47 & 49-FOOT PROJECT
 STA. 8+00 CUT-47 THRU STA. 10+00 CUT-49
PLAN
 Scale: AS SHOWN
 Drawing no. **34**
 SHEET 34 OF 57

MAP LABEL	AIDS TO NAVIGATION	PLANE COORDINATES		LATITUDE	LONGITUDE
		X	Y		
G-6*	LT. BUOY-57 (07/22)	468.625	2209.176	30°24'32.9"	81°35'41.74"





US Army Corps of Engineers
Jacksonville District

SAFETY ON THIS JOB
DEPENDS ON YOU

DEPARTMENT OF THE ARMY
JACKSONVILLE DISTRICT, CORPS OF ENGINEERS
JACKSONVILLE, FLORIDA

Checked by:

GHR

Designed by:

WRM

DWY

WRM

WRM

JAY HARBOR 47 EXTENSION-CAVIGCC-DGN

22-145-65-BS-BR3-DGN

Reference file:

22-145-HARBOR-DGN

XXXXXXXXXXXXXXXXXXXX
XXXXXXXXXXXXXXXXXXXX
22-145-CAVIGCC-DGN
XXXXXXXXXXXXXXXXXXXX
XXXXXXXXXXXXXXXXXXXX
JAY HARBOR 47 EXTENSION-CAVIGCC-DGN
22-145-65-BS-BR3-DGN
Reference file:
22-145-HARBOR-DGN
File name:

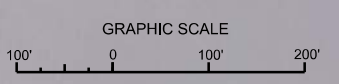
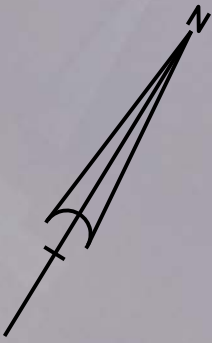
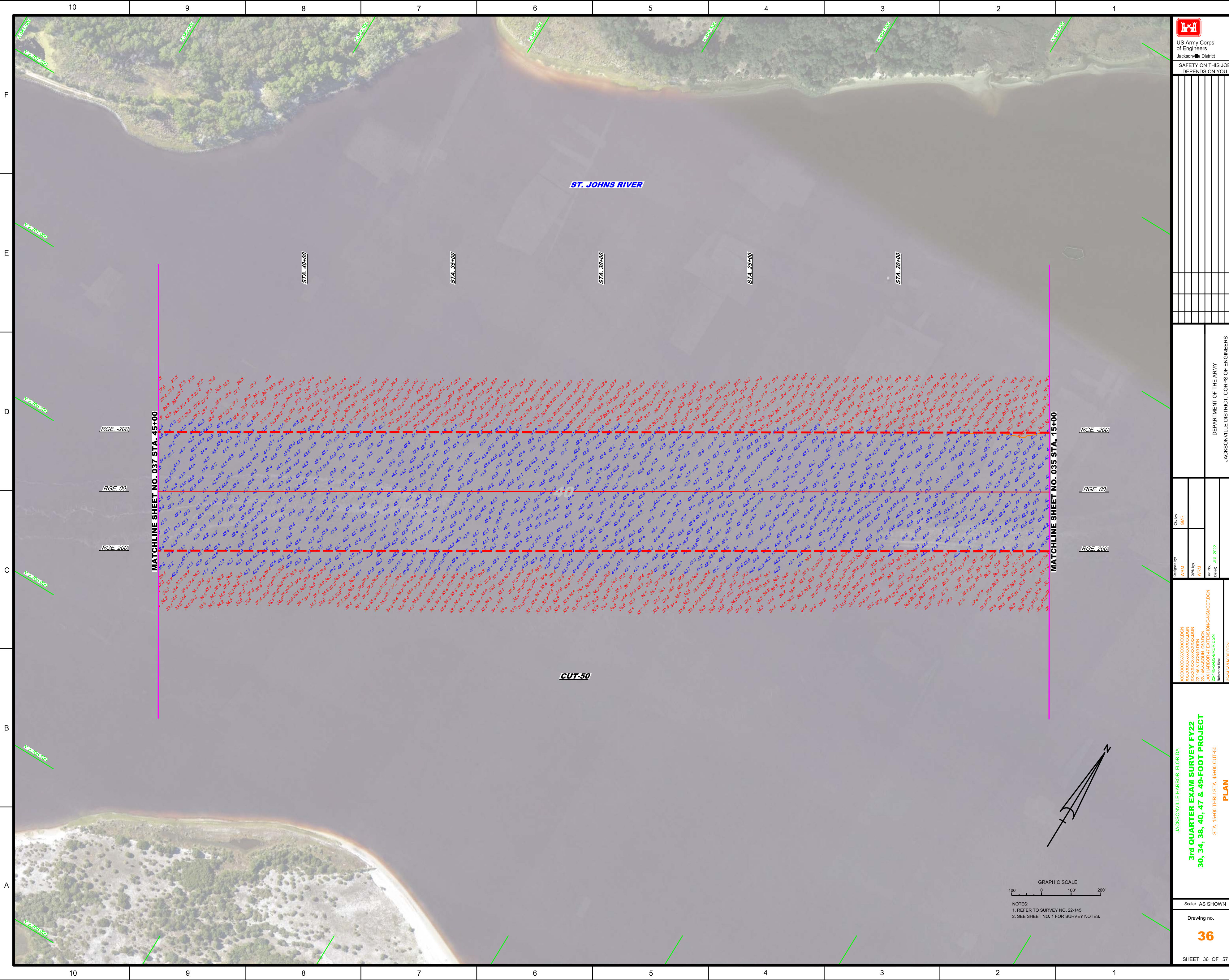
JACKSONVILLE HARBOR, FLORIDA
3rd QUARTER EXAM SURVEY FY22
30, 34, 38, 40, 47 & 49-FOOT PROJECT
STA. 15+00 THRU STA. 45+00 CUT-50
PLAN

Scale: AS SHOWN

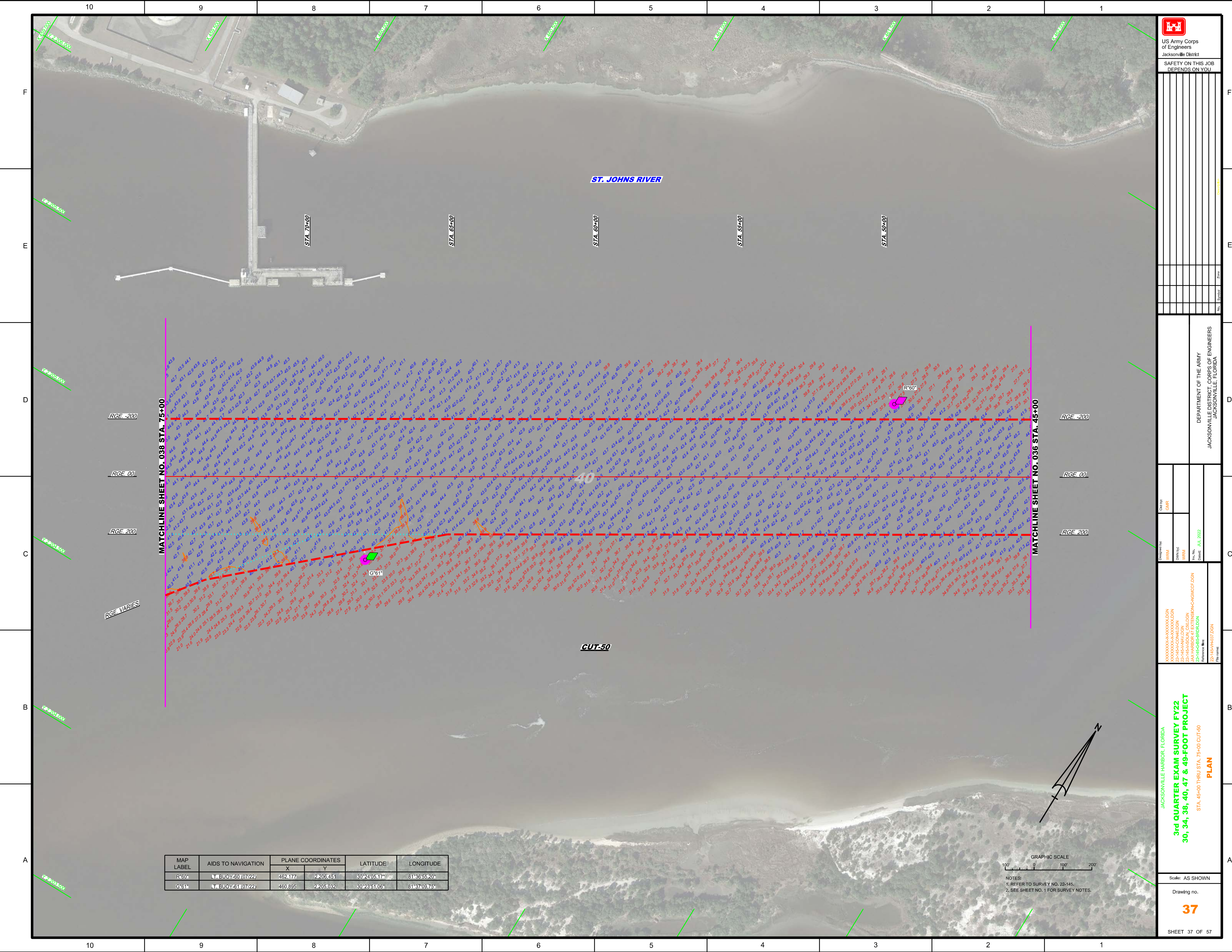

Drawing no.

36

SHEET 36 OF 57



NOTES:
1. REFER TO SURVEY NO. 22-145.
2. SEE SHEET NO. 1 FOR SURVEY NOTES.

US Army Corps
of Engineers
Jacksonville District

**SAFETY ON THIS JOB
DEPENDS ON YOU**

DEPARTMENT OF THE ARMY
JACKSONVILLE DISTRICT, CORPS OF ENGINEERS
JACKSONVILLE, FLORIDA

Designed by: **WRM**
Checked by: **GHR**

Drawn by: **WRM**
Reviewed by: **WRM**

Project Name: **JAX HARBOR EXTENSION-C&G&CCE-DGN**
Revision No.: **22-145-BS-BR-04-DGN**
Reference File: **22-145-HA-R37-DGN**

JACKSONVILLE HARBOR, FLORIDA
3rd QUARTER EXAM SURVEY FY22
30, 34, 38, 40, 47 & 49-FOOT PROJECT

Scale: AS SHOWN

Drawing no. **37**

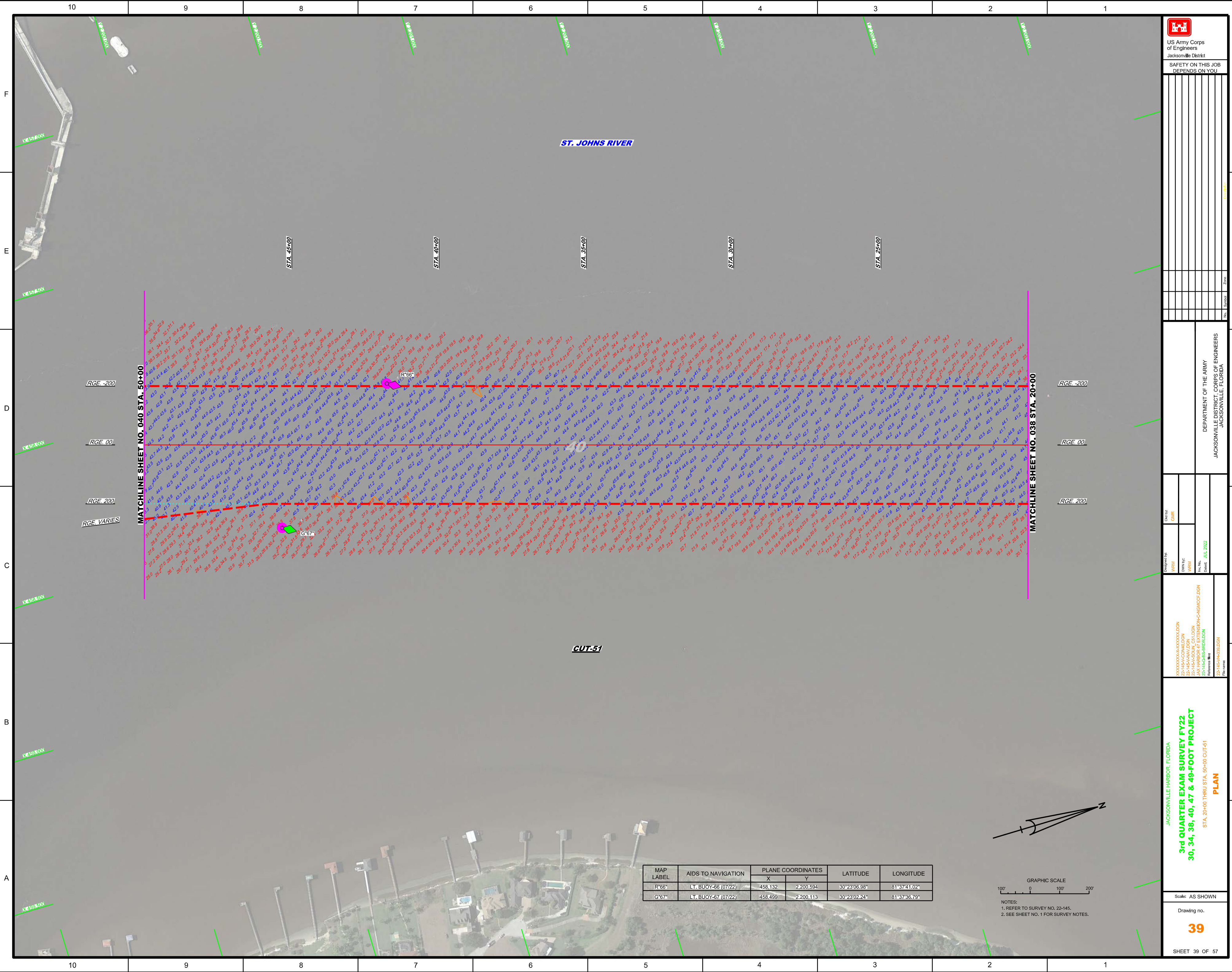
SHEET 37 OF 57

PLAN

MAP LABEL	AIDS TO NAVIGATION	PLANE COORDINATES		LATITUDE	LONGITUDE
		X	Y		
R60	LT BUOY-60 (07/22)	462,177	2,206,451	30°24'05.17"	81°38'55.20"
G61	LT BUOY-61 (07/22)	460,895	2,205,032	30°23'51.06"	81°37'09.75"



NOTES:
1. REFER TO SURVEY NO. 22-145.
2. SEE SHEET NO. 1 FOR SURVEY NOTES.



US Army Corps of Engineers

 Jacksonville District

 SAFETY ON THIS JOB

 DEPENDS ON YOU

DEPARTMENT OF THE ARMY

 JACKSONVILLE DISTRICT, CORPS OF ENGINEERS

 JACKSONVILLE, FLORIDA

Drawn by: WRM

 Check by: GHR

 Date: JUL 2022

22-145-00-000000.DGN

 22-145-00-000000.DGN

 22-145-00-000000.DGN

 22-145-00-000000.DGN

 22-145-00-000000.DGN

JACKSONVILLE HARBOR, FLORIDA

3rd QUARTER EXAM SURVEY FY22

30, 34, 38, 40, 47 & 49-FOOT PROJECT

 STA. 20+00 THRU STA. 50+00 CUT-51

PLAN

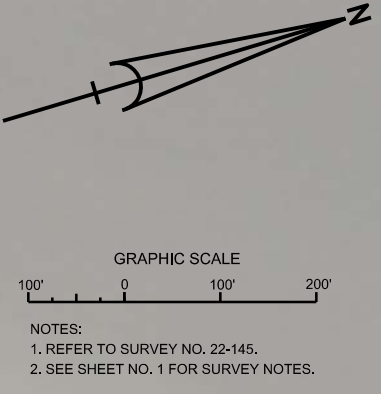
Scale: AS SHOWN

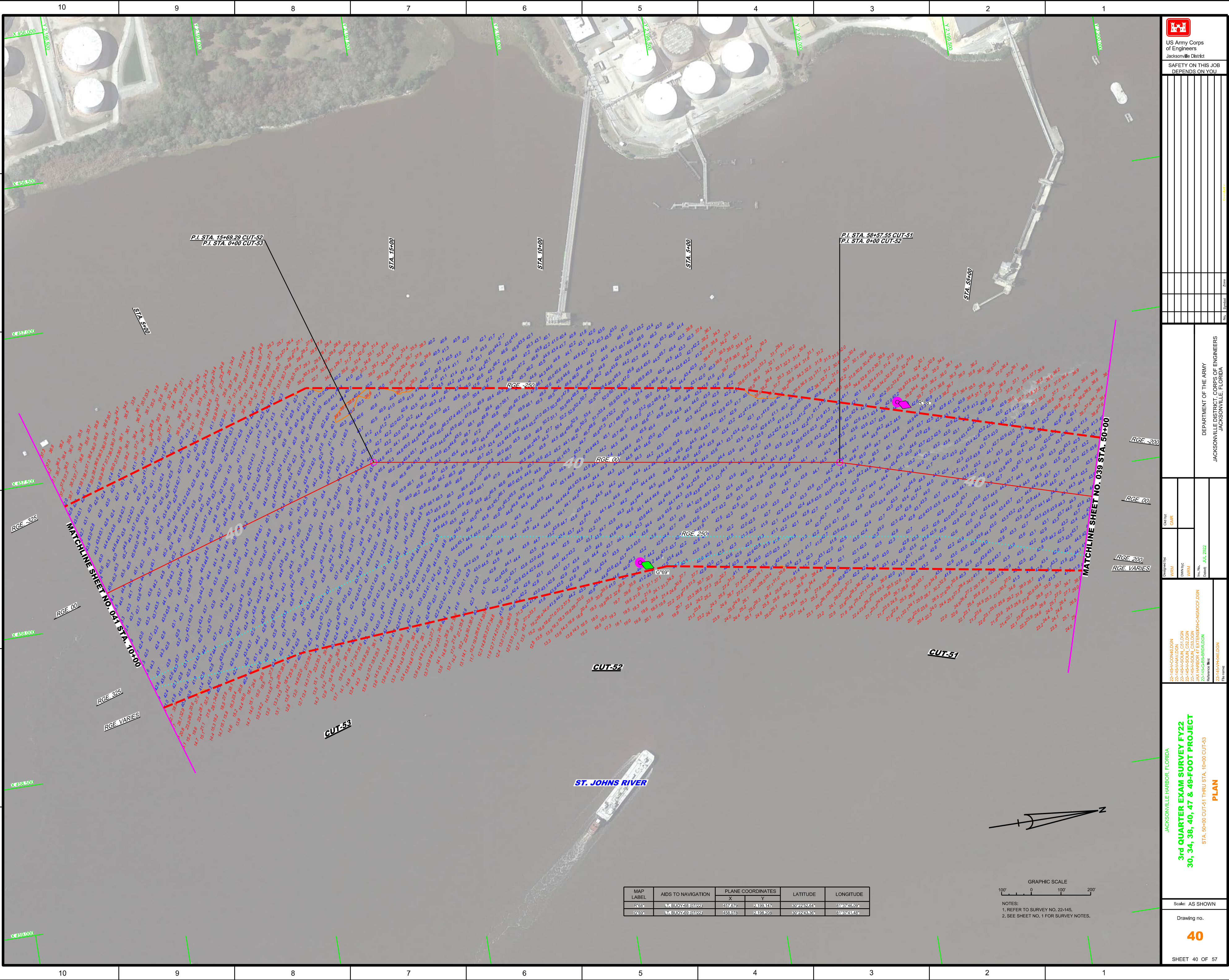
 Drawing no.

39

 SHEET 39 OF 57

MAP LABEL	AIDS TO NAVIGATION	PLANE COORDINATES		LATITUDE	LONGITUDE
		X	Y		
R'66"	LT. BUOY-66 (07/22)	458,132	2,200,594	30°23'06.98"	81°37'41.02"
G'67"	LT. BUOY-67 (07/22)	458,498	2,200,113	30°23'02.24"	81°37'36.76"





US Army Corps of Engineers
Jacksonville District

SAFETY ON THIS JOB
DEPENDS ON YOU

DEPARTMENT OF THE ARMY
JACKSONVILLE DISTRICT, CORPS OF ENGINEERS
JACKSONVILLE, FLORIDA

Check by: GHR

Designed by: WRM

Drawn by: WRM

Scale: AS SHOWN

Date: JUL 2022

JACKSONVILLE HARBOR, FLORIDA

3rd QUARTER EXAM SURVEY FY22
30, 34, 38, 40, 47 & 49-FOOT PROJECT

STA. 50+00 CUT-51 THRU STA. 10+00 CUT-53

PLAN

Scale: AS SHOWN

Drawing no. **40**

SHEET 40 OF 57

MAP LABEL	AIDS TO NAVIGATION	PLANE COORDINATES		LATITUDE	LONGITUDE
		X	Y		
C68	16-BUDY-38 (G722)	457.670	2439.147	33°22'28.24"	31°57'25.22"
C69	16-BUDY-59 (G722)	458.070	2438.200	33°22'43.50"	31°57'41.43"

